



WARWICK
RITTENHOUSE SQUARE
PHILADELPHIA



Legendary Meetings and Events

Ideally located in Downtown Philadelphia in the heart of Rittenhouse Square, we offer sleek décor and furnishings, vibrant colors, and modern technology. Experience over 17,000 square feet of iconic meeting space including two historic ballrooms that have been hosting distinguished guests and events since 1928.

HIGHLIGHTS

- Concierge Services
- Complimentary WiFi
- In-room spa services
- Same-day valet dry cleaning services
- Fitness center with weight room and 20 aerobic machines
- Complimentary business center with computer and printer access
- Express check-in/check-out
- Rittenhouse Grill, Spice Finch, and Bluestone Lane Café dining outlets

MEETINGS

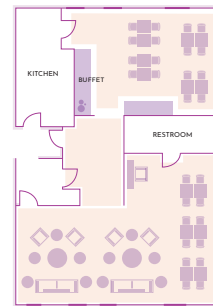
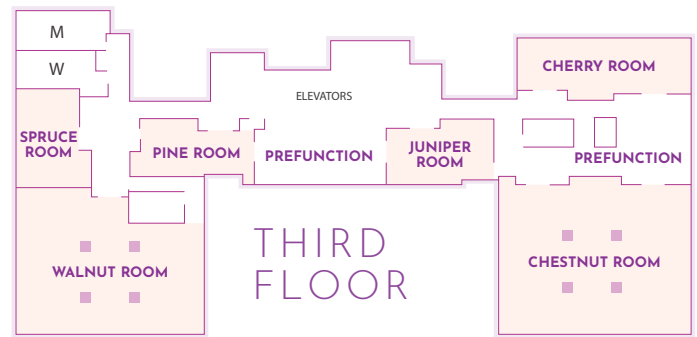
- 18,000 square feet of total meeting space ideal for up to 400 guests
- 10 flexible meeting rooms
- One historic ballroom
- Grand Ballroom features custom digital lighting
- Dedicated team of meeting and event experts
- Mainline AV International providing audiovisual equipment and support

LOCATION

Our ideal location in Rittenhouse Square puts you in the middle of the action. Enjoy an authentic Philadelphia experience and walk to Broad Street's Avenue of the Arts, the Philadelphia Convention Center, Independence Hall, and the Liberty Bell. World-class shopping, dining, and nightlife are also just minutes away.



2017 • 2018
VENUE OF THE YEAR
AWARD WINNER



ROOM	Dimensions	Sq Ft.	Ceiling Height	Reception	Rounds (10)	Crescent Rounds (6)	Classroom	U-Shape	Theatre	Floor
Grand Ballroom	53' x 71'	3,750	17'	400	300	120	150	72	300	2nd
Locust Room	56' x 45'	2,520	9'	175	160	60	55	35	125	2nd
Warwick Room	26' x 54'	1,404	9'	80	70	24	24	18	50	2nd
Chancellor Room	20' x 37'	740	9'	40	40	24	30	30	60	2nd
Mezzanine Prefunction	84' x 14'5"	1,200	9'	75	50	-	-	-	-	2nd
Chestnut Room	47' x 49'6"	2,331	7'4"	150	120	48	55	35	125	3rd
Walnut Room	49'4" x 41'	2,005	7'4"	100	100	24	50	35	100	3rd
Cherry Room	44' x 17'	748	7'4"	40	40	24	30	30	60	3rd
Spruce Room	31'6" x 17'	537	7'4"	20	30	18	18	18	30	3rd
Pine Room	30'6" x 17'4"	532	7'4"	20	30	18	18	18	30	3rd
Juniper Room	28'6" x 17'4"	498	7'4"	20	30	18	18	18	30	3rd
Cypress Room	-	1,572	-	-	-	-	-	-	-	11th

*Capacities are subject to change based on actual set up requirements (A/V, etc.)